

## Chassis

**pgs 01 - 83**

Ford.....	49-57
Freightliner.....	58-80
GM / Workhorse.....	8-48
International.....	81-82

## Body

**pgs 84- 95**

Bumpers.....	2-6
Grumman / Morgan Olson.....	84-87
Union City Body Company.....	90-91
Utilimaster.....	88-89
Supreme Body.....	90

## Door Hardware

**pgs 96 - 115**

Bulkhead Door.....	112-113
Paddle Latches.....	114-115
Rear Door Hardware.....	105-110
Side Door Hardware.....	100-104
Windows, & Parts.....	96-98

## Roll Up Door

**pgs 116 - 133**

Complete Door Replacement.....	116-124
Dover & Diamond.....	133
Shutter Doors.....	122
Todco.....	125-129
Whiting.....	130-132

## Seating

**pgs 134 - 138**

Driver's Seating.....	134-135
Passenger Seating.....	136-138

## Heating & A/C

**pgs 139 - 163**

Auxiliary Heaters.....	139-140
Grumman / Morgan Olson.....	141-146
Heater Parts by Type.....	154-161
Union City Body Company.....	147-148
Utilimaster.....	149-151
Vents & Fans.....	162-163

## Wiper

**pgs 164 - 172**

Grumman / Morgan Olson.....	164-165
Union City Body Company.....	168
Utilimaster.....	166-167
Wiper Parts by Type.....	169-172

## Mirrors

**pgs 173 - 180**

Crossview Mirrors.....	180
Velvac Dual Head.....	174-175
Velvac 2020 & 2025.....	176-177
Velvac VMax.....	178
Rosco Accustyle.....	179
West Coast.....	173

## Lights

**pgs 181 - 199**

Incandescent.....	193-197
LED.....	182-193
Reflectors.....	199
Work Lights.....	181

## Electrical

**pgs 200 - 212**

Audio Systems.....	202
Rear View Backup Cameras.....	200-201
Switches.....	203-208
Trailer Connectors.....	212

## Safety

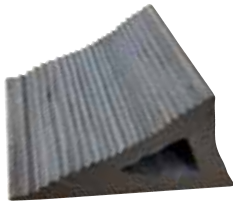
**pgs 213 - 215**

Anti-Slip Tape.....	214
Backup Alarms.....	213
Cargo Control.....	214-215
Wheel Chocks.....	213

**Keep Updated at  
MillSupply.com**

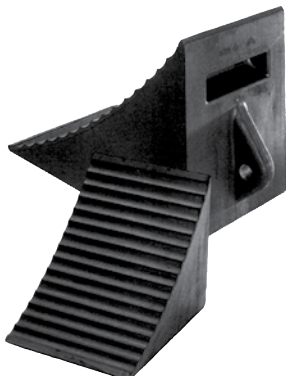
**WHEEL CHOCKS**

Made of Tough Reinforced Rubber - Resistant to Sun, Salt,  
Oil and acid - Practically Indestructible



**76-530**  
**Rubber Wheel Chock**  
Height 5", Serrated Base  
Road Contact: 5" x 6"  
Weight: 2.35 lbs.

**76-550**  
**Rubber Wheel Chock**  
Height 5", Serrated Base  
Road Contact: 8" x 6"  
Weight: 4.4 lbs.



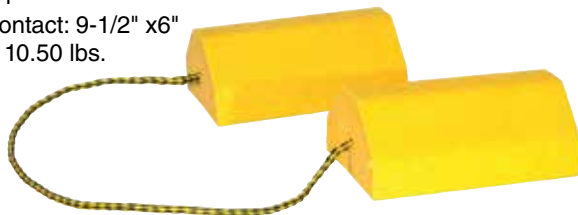
**76-590**  
**Heavy-Duty Rubber Wheel Chock with Anchor for Chain & Hand Hold**  
Height: 8-1/4"  
Road Contact: 7" x 10-1/4"  
Weight: 11.15 lbs.

**76-595**  
**Heavy-Duty Rubber Wheel Chock with Handle**  
Height: 5"  
Road Contact: 10" x 8"  
Weight: 8.00 lbs.



**76-770**  
**Aluminum Wheel Chock**  
28,000 lb. capacity  
Height: 5-1/4"  
Road Contact: 6" x 7"  
Weight: 1.50 lbs.

**76-585**  
**Yellow Composite Wheel Chock with Rope**  
Safety yellow recycled composite, connected together with 32" rope  
Height: 4"  
Road Contact: 9-1/2" x 6"  
Weight: 10.50 lbs.

**BACK-UP ALARMS****97 DECIBEL BACK ALARM**

4" W x 1-5/8" D x 2-5/8" H

**87-005** 97 decibel back alarm gives a clear warning. Can be mounted on any flat vertical or horizontal surface. Install with back-up light negative ground or with separate switch. 1 Year Warranty.

**4" ROUND BACK ALARM**

Remove One Back-Up Lamp and Replace it  
with this 97 Decibel Back Alarm

**87-026** - Solid state 4" round back alarm is resistant to elements and fits into a 4" grommet. DOT law only requires one back-up lamp. Rated at 97 decibels. Easy to wire.



**Grommet Not Included**  
Use Grommet from Back-Up Lamp or order Separately

**94993** - Pigtail  
**40700** - Grommet

**SELF-ADJUSTING BACK ALARM WITH AUTOMATIC VOLUME CONTROL**

5" W x 3-3/4" D x 3" H

**BA-1040**  
Self-Adjusting Back Alarm.  
Adjusts from 87 to 112 decibels depending on the outside noise levels. Can be heard all the time but is never too loud. Automatically adjusts to 10 decibels above the surrounding noise. Runs on 12 or 24 volt.



## CARGO CONTROL



**400lb Work Load Limit**

**84-105 - 20' Pull Strap,**  
1" Wide with 'S' Hooks, with 4 ft. fixed end

**8L-4242 - 15' Ratchet Strap,** 1" Wide with 'S' Hooks  
with 1 ft. fixed end



**5697-C Cake Rack Fastener** - Eliminate sliding cake racks permanently! Spring actuated for easy operation. Racks slide in automatically but need to be released for removal. Dim: 3/4"W x 8-7/8"L



**5597-Z Mini Steel Latch Bolt.** Used on drawers and small cabinets. Spring loaded, easily actuated. 4-3/4" long



**84-601 – Recessed Rope Ring**

- 285 lb. Safe working load
- Zinc plated
- Requires 3" diameter mounting hole in 3/8" or thicker material (not for lifting).



**B-32F – Surface Mount Rope Ring**

- 2000 lb. Working load limit
- Zinc plated
- 3/8" forged rope ring
- Do not use for lifting



**B-20 – Surface Mount Rope Ring**

- 800 lb. Working load Limit
- Zinc plated
- 1/4" dia. Steel ring and formed steel clamp
- Do not use for lifting



**41-038 - Lashing Ring with Bracket**

- 4080 lb. Working load limit
- 11,700 lb. Breaking Strength
- 1/2" dia. ring with 2-3/8" inside dimension
- Bracket: 1-3/4"W x 3/16" thick.
- 2" Mount centers, Uses 3/8" carriage bolts



**41-040 - Lashing Ring with Bracket**

- 6000 lb. Working load limit
- 18,000 lbs. Breaking strength
- 5/8" dia. ring with 3" inside dimension
- Bracket: 2-1/2" W x 3/8" thick.



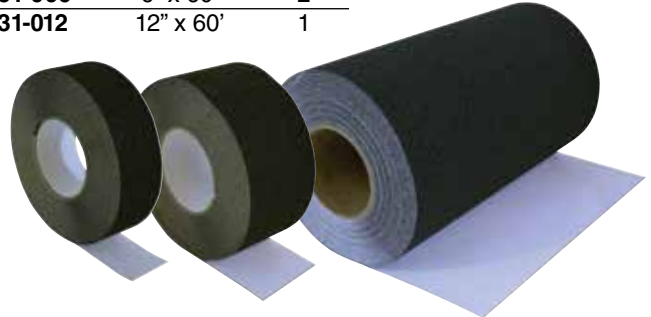
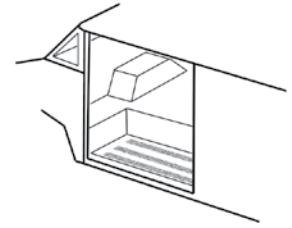
**41-046 - Lashing Ring with Bracket**

- 9120 lb. Working load limit
- 26,500 lbs. Breaking strength
- 3/4" dia. ring with 3" inside dimension
- Bracket: 2-1/2" wide x 3/8" thick.

## ANTI-SLIP, HIGH TRACTION SAFETY TAPE

Order by Case  
or 60' Roll

Part No.	Size	In Case
31-001	1" x 60'	12
31-002	2" x 60'	6
31-003	3" x 60'	4
31-004	4" x 60'	3
31-006	6" x 60'	2
31-012	12" x 60'	1



## RIGHT HAND SAFETY GRAB RAIL



**18-930 Custom Right Hand Grab Rail.** Comes in safety yellow and is adjustable from 28" to 32" H. Base width: 17-1/2" Overall Width: 32". Feet are adjustable to 15 degrees.

## DOCUMENT HOLDERS



**84-900 Document Pouch** with 4 metal grommets for mounting. Keep important papers well protected and in plain view for quick reference and vehicle inspections. Pouch Size: 11" x 6" with full lid, Black in Color.



**84-950 Aluminum document holder.** Inside dim: 9" W x 5" H x 1" D. Flanges measure approx. 5/8".

## CUP HOLDERS

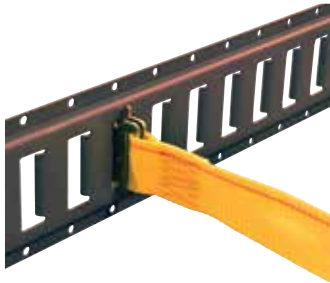


**18-603 Collapsible, adjustable drink holder.** Dim: 4" H x 4-3/16" W x 7/8" D closed.



**18-610 Surface Mount Drink Holder.** Popular on dash or Engine Cover.

## E-TRACK CARGO STRAPS



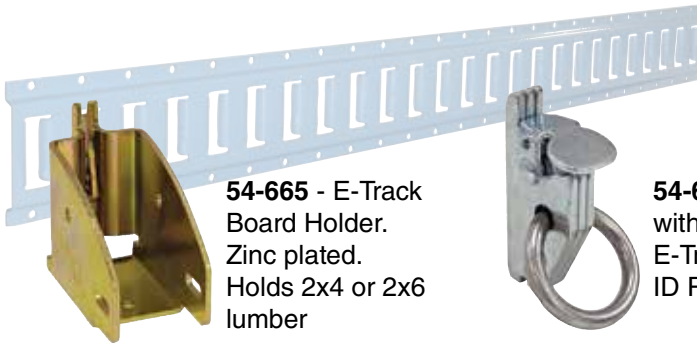
**Cam Buckle E-Strap Assembly.** Uses weather resistant, 4500 lb. rated, yellow strapping. 48" fixed end length. **Working load limit of 833. lbs.**

**84-512** ..12 foot  
**84-516** ...16 foot  
**84-520** ..20 foot



**12' Ratchet Buckle E-Strap Assembly.** Can be order with 3-piece end fitting or a spring loaded end fitting. 48" fixed end length. Assembled using heavy-duty 12,000 lb. weather resistant yellow polyester webbing. **Working load limit: 1000 lbs.**

**84-312** - 12 foot with 3-piece end fitting  
**84-212** - 12 foot with spring loaded end fitting



**54-665** - E-Track Board Holder. Zinc plated. Holds 2x4 or 2x6 lumber

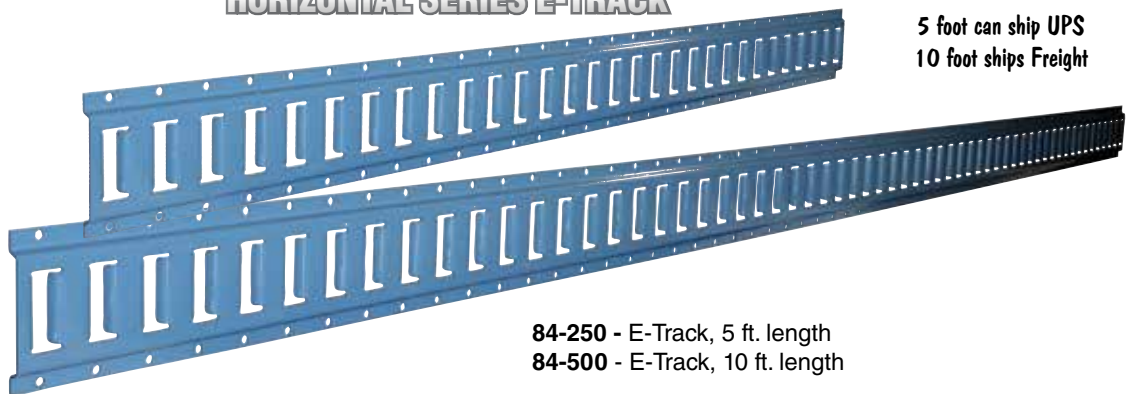
**54-667** - Rope Ring with spring loaded E-Track fitting. 1-5/16" ID Ring, Zinc plated.



**84-550** - 2" x 6" Rope Ring with Strap w/ E-Track Fitting, 3000 lb capacity, 1000 working load limit.

## HORIZONTAL SERIES E-TRACK

- Powder coated
- 5 or 10 foot long
- 12-gauge steel
- 50,000 lbs. min. yield
- Can be attached by screws, rivets or welded

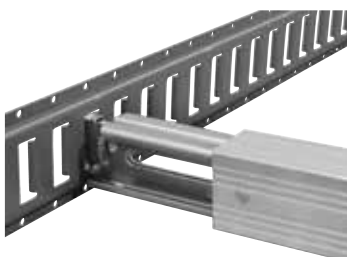


5 foot can ship UPS  
 10 foot ships Freight

**84-250** - E-Track, 5 ft. length  
**84-500** - E-Track, 10 ft. length

## SERIES E ALUMINUM SHORING BEAM

Series E Aluminum Decking/Shoring Beam Assembly with spring loaded end latch assembly. 2200 lb. Working Load Limit



**84-584** ..... 84.5"-95.4" E Aluminum Shoring Beam Assy  
**84-593** ..... 93"-102" E Aluminum Shoring Beam Assy

### Replacement Parts

**43627-10** End Assembly with spring loaded end fitting. Can be used with old or new aluminum beams. We recommend ordering the rivet pin 41338-10 when ordering this end assembly.



**41338-10** - Rivet Pin for End Assembly

# INDEX

Air Filters, Freightliner.....	61	Fuse Kits.....	211	Safety Railing .....	214
Accelerator Cables & Pedals .....	14,50,61,74	Gas Hood Shocks.....	87,89-91	Safety Tape.....	214
Adhesives/Sealants .....	95	Gaskets, Engine Cover .....	92	Seat Belts .....	137
Anti-Slip Tape .....	214	Glo-Plug Controller, GM .....	13	Seat Pedestals.....	135
Audio Systems.....	202	Grab Handles .....	111	Seats, Driver & Passenger .....	134-138
Auxiliary Heaters .....	139-140	Grilles, Lamp & Hood Hardware .....	84-92	Security Lock & Hasp .....	106
Back Up Alarms.....	213	Grumman Olson, Body Hardware .....	84-87	Shift Cable, Automatic Trans.....	14
Battery Cable.....	23,207	Handles & Latches, Side & Rear Door .....	101-113	Shifter Boots .....	74,89,92
Battery Trays & Accessories.....	23,74	Headlights & Bezels .....	84-91,182-183	Shifter, Freightliner.....	61
Brake & Wheel Hdw, GM/Workhorse.....	26-39	Heater Parts, All .....	139-161	Shocks,GM .....	25-38
Brake & Wheel Hdw, Ford.....	54-56	Hinges, Hood.....	84-91	Shocks, Freightliner .....	65-71
Brake & Wheel Hdw, Freightliner.....	65-74	Hinges, Rear Door.....	107	Shock, John-Deere & Oshkosh .....	63
Brake & Wheel Hdw, International.....	82	Hood Hardware, Grilles & Lamps .....	84-91	Shutter Rollup Doors .....	122
Brake & Wheel Hdw, John-Deere & Oshkosh .....	64	Hood Holddowns .....	88-92	Sliding Windows .....	96-97
Brake Line Kit .....	35,74	Horns & Contacts .....	50,61,74	Steering Column Switches & Components, GM .....	16-17
Bulk Head Door Hardware.....	112-113	Hydroboost & Master Cylinder.....	20,21	Steering Gear Boxes .....	18,62
Bumpers, Front & Rear.....	2-5	Hydromax & Master Cylinder.....	22,73	Steering Linkage, GM.....	24,25,29
Bumpers, Hood & Engine Cover.....	87,89,92	Idle Pulley & Belt Tensioner, GM .....	13	Steering Linkage, Ford .....	53
Cargo Control .....	214-215	Ignition Coil, Ford.....	49,206	Steering Linkage, Freightliner.....	65-67
Circuit Breakers .....	211	Instrument Clusters .....	19	Steering Linkage, John-Deere & Oshkosh .....	63
Clutch & Fan Blade, Freightliner .....	58,60	Insulation, Engine Cover.....	89	Steering Pumps & Reservoirs .....	18,62
Column Shift Tube Repair.....	50	Key Rings & Tags.....	106	Steering Pressure Hoses, GM.....	19
Condenser Fans .....	7	King Pins, Kaiser .....	28,63,65,67,81	Steering Wheels, Freightliner .....	61
Coolant Overflow Tanks .....	11	Lashing/Rope Rings .....	214	Steps, Retractable .....	5
Cup Holders.....	214	Latches & Door Hardware .....	102-115	Sun Visors .....	172
Diamond and Dover Door.....	133	Latches, Flush (Paddle).....	114-115	Supreme Body - Body Hardware.....	90
Dock Bumpers.....	6	Latches, Hood .....	85-92	Surge Tanks.....	11,58,60
Document Holder.....	214	License Plate Boxes .....	6,199	Suspension, Front/Rear, GM/Workhorse.....	24-39
Door Handles & Hardware.....	101-115	Lighting, All.....	181-199	Suspension, Front/Rear, Ford.....	53-57
Door Holders .....	111	Manifolds, Exhaust, GM.....	45	Suspension, Front/Rear, Freightliner .....	65-72
Electrical Switches, Wire, Connectors.....	203-212	Manifolds, Exhaust, Ford .....	52	Suspension, Front/Rear, Oshkosh,J-D .....	63-64
Elevator Bolts.....	126,132	Master Cylinders.....	21-22,73	Switches & Pigtails .....	203-212
Emergency Drive Line Brake Parts.....	34,56,74	Mirrors & Mounting Hardware.....	173-180	Todco Roll Up Door.....	125-129
Engine Cover Gaskets, Holddowns & Insulation .....	88-92	Morgan Olson, Body Hardware .....	84-87	Trailer Connectors, Electrical .....	212
Engine Block Heaters .....	78,153	Mud Flaps.....	95	Transmission Shift Cable .....	14
Engine Oil Cooler Lines, GM .....	9	Oil Caps & Dipsticks, GM/Workhorse .....	12,13	Transmission & Engine Cooler.....	12,49
Engine Oil Filler Tube, Ford .....	50	Oil Fill Caps, Ford.....	50	Transmission Mounts & Parts .....	23,49,74
Engine Parts, Diesel.....	13	Overflow Tanks, Coolant.....	11	Triangle Reflector Set .....	199
Engine/Transmission Oil Cooler.....	12,49	Paddle Latches.....	114-115	Union City Body Co, Body Hardware.....	90-91
Engine & Transmission Mounts .....	23,49,61,74	Paint, Touch Up .....	2	Universal Joints .....	36-39,56,70-71
Exhaust Systems, GM/Workhorse.....	45-48	Pedal Pads, Brake/Accelerator .....	14,50,72,82	Utilimaster, Body Hardware .....	88-89
Exhaust Systems, Ford.....	52	Proportioning Valve, GM.....	26,30	Vacuum Pump .....	13,153
Exhaust Systems, Freightliner .....	79-80	Quarter Turn Fasteners .....	93	Vents & Fans.....	162-163
Exhaust Systems, International .....	81	Radiator & Condenser Fans .....	7	Video Camera Systems.....	200-201
Fan Blade, Freightliner.....	58,60	Radiators & Caps, GM/Workhorse .....	8-10	Washer Reservoirs .....	172
Fan Shroud, Freightliner .....	58	Radiators, Ford .....	49	Water Pumps.....	11,60
Fans, Ventilator & Circulating.....	162-163	Radiators, Freightliner, J-D & Oshkosh.....	58-60	Weatherpack Kit .....	211
Fans, Condenser & Radiator .....	7	Radiator Insulators .....	9	Weatherstrip, Side & Rear Door .....	100
Filler Necks, Universal .....	83	Radiators, International .....	81	Weatherstrip, Universal.....	95
Filler Tubes and Fuel Caps .....	41,51,77,78	Rear Ends & Components, GM .....	36-39	Wheel Chocks .....	213
Flashers.....	189,197	Reflective Safety Tape .....	199	Wheel Nut Indicators .....	83
Freeze Plug Heaters.....	153	Reflectors & Reflector Sets .....	199	Wheel Rims & Simulators.....	40,57,81
Front End Body Parts .....	84-92	Rims & Wheel Simulators.....	40,57,81	Whiting Roll Up Door .....	130-132
Fuel Line Kit.....	78	Rivets, Tools & Accessories.....	93-94	Window Regulators .....	98
Fuel Tanks, Straps, Pumps, Caps, GM.....	41-44	Roll Up Door, All .....	116-133	Windows, Side Door & Windshield .....	96-99
Fuel Caps, Ford.....	51	Roof Vents .....	162	Windshield Glass, Gasket & Tools.....	99
Fuel Tanks & Caps, Freightliner.....	75-77	Rub Rail Caps .....	85,91	Winterfront.....	86,87
Fuel Tanks, International .....	81	Rubber Bumpers .....	6	Wiper Parts, All.....	164-172
Fuel Tank Doors .....	85,89	Rubber Fender.....	95		