

VELVAC REPLACEMENT "PRESET" MECHANISM

THE PURPOSE OF THE MIRROR "PRESET" IS TO PROVIDE A PREDETERMINED "HOME" POSITION FOR A PIVOTING MIRROR ASSEMBLY. THIS USEFUL FUNCTION ALLOWS THE MIRROR ASSEMBLY TO BE SWUNG TO AN INBOARD POSITION AND THEN RETURNED TO ITS ORIGINAL VIEWING POSITION WITHOUT THE USE OF TOOLS OR MANUAL READJUSTMENTS. THE MIRROR ASSEMBLY MAY BE SWUNG INBOARD TO REDUCE OVERALL VEHICLE WIDTH FOR PARKING IN TIGHT AREAS OR THE ASSEMBLY MAY BE FORCED TO PIVOT INBOARD DUE TO IMPACT.

CAREFULLY FOLLOW THE INSTRUCTIONS AS OUTLINED TO INSURE THAT YOUR MIRRORS HAVE A PROPERLY FUNCTIONING MIRROR "PRESET".

INSTRUCTIONS

READ ALL INSTRUCTIONS FIRST.

REMOVAL OF EXISTING PRESET

- 1) HOLDING PIVOT BOLT STATIONARY, REMOVE LOCKNUT.
- 2) REMOVE PIVOT BOLT AND DISCARD ALL PARTS EXCEPT MOUNTING BRACKET.

ASSEMBLY OF NEW PRESET REPLACEMENT

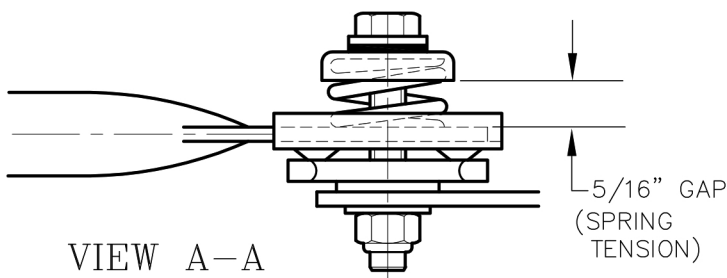
- 1) ASSEMBLE ITEMS 1 THRU 7 ON TO LOOP, TIGHTENING PIVOT BOLT (ITEM 1) INTO THREADED LOCKPLATE (ITEM 7) UNTIL DIMENSION IS ACHIEVED AS SHOWN IN VIEW A-A BELOW.

NOTE: BE SURE DIMPLES OF RIVET PLATE (ITEM 6) ARE LINED UP WITH HOLES IN LOCK PLATE BEFORE TIGHTENING.

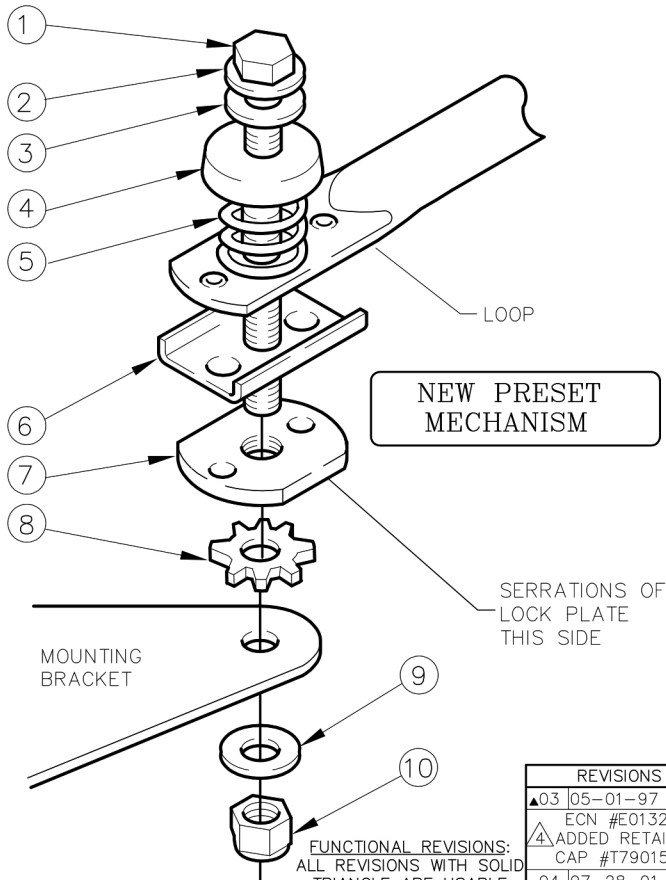
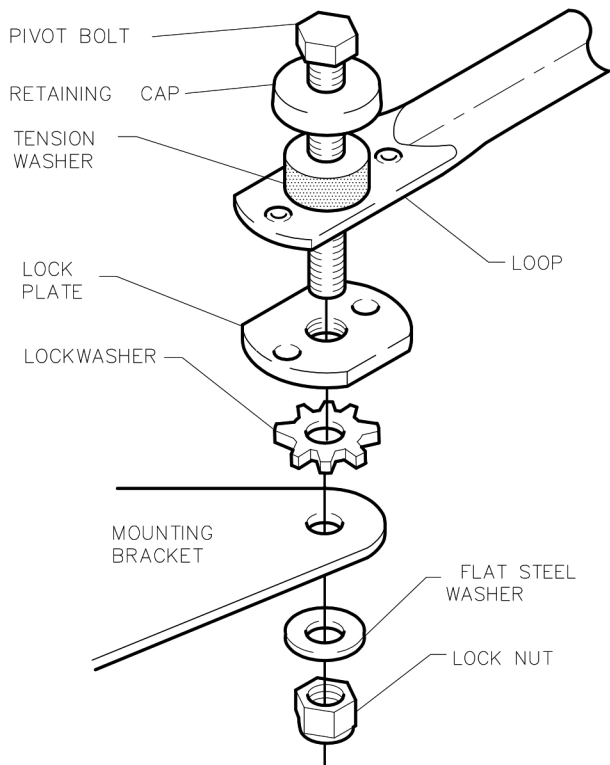
- 2) ASSEMBLE ITEMS 8 THRU 10 ALONG WITH REST OF PRESET MECHANISM ON TO MOUNTING BRACKET AS SHOWN AND HAND TIGHTEN LOCKNUT (ITEM 10)

- 3) BEFORE TIGHTENING LOCKNUT (ITEM 10) ROTATE MIRROR ASSEMBLY TO PROPER VIEWING POSITION ON VEHICLE AS OUTLINED ON BACK SIDE OF SHEET. HOLDING PIVOT BOLT (ITEM 1) STATIONARY, TIGHTEN LOCKNUT (ITEM 10) TO 200-225 IN.-LBS.
- 4) CHECK "PRESET" FUNCTION BY ROTATING LOOP BACK AND FORTH. A DEFINITE CLICK WILL BE HEARD AND FELT AS THE LOOP IS ROTATED PASSED THE "HOME" POSITION.
- 5) RETURN LOOP TO "HOME" POSITION. THE LOOP SHOULD SNAP FIRMLY INTO PLACE. (LOCK PINS SHOULD BE FIRMLY LOCATED IN HOLES OF LOCK PLATE.)

NOTE: USE A GOOD ALL WEATHER GREASE PERIODICALLY ON THE LOCK PINS TO MAINTAIN SMOOTH OPERATION.



EXISTING PRESET MECHANISM



NO.	QTY	DESCRIPTION	MAT.	PART NO.
1	1	HEX HEAD BOLT 5/16-18 X 2.00	SS	4070650
2	1	FLAT WASHER 5/16	SS	4000180
3	1	NYLON WASHER 5/16	NYL	4000410
4	1	RETAINING CAP	SS	T7901510
5	1	TENSION SPRING	SS	T7904680
6	1	RIVET PLATE	SS	T7904690
7	1	LOCK PLATE 5/16-18	SS	T7901180
8	1	EXTERNAL LOCKWASHER 5/16	SS	4010120
9	1	FLAT WASHER 5/16	SS	4000180
10	1	ELASTIC LOCKNUT 5/16-18	SS	4050290

REVISIONS	
▲03	05-01-97 LM ECN #E01324
▲4	ADDED RETAINING CAP #T7901510
▲04	07-28-01 JS

FUNCTIONAL REVISIONS:
ALL REVISIONS WITH SOLID
TRIANGLE ARE USABLE

PROPRIETARY
THIS CONCEPT & DRAWING IS THE
PROPERTY OF VELVAC, INC. AND
SHALL NOT BE REPRODUCED,
COPIED, DISCLOSED, USED FOR THE
MANUFACTURE OR PROCUREMENT
FROM SOURCES OTHER THAN VELVAC
INC., WITHOUT WRITTEN PERMISSION
FROM VELVAC INC.

SCALE: .375
DATE: 06-17-91

DRAWN BY: T.R.

**INSTALLATION INSTRUCTION
FOR UPS "PRESET"
REPLACEMENT ASS'YS**

DRAWING NUMBER: (ONE OF TWO)

7129792

VELVAC