

**719Tools required:** Small flat head screw driver, Socket driver, 10mm deep well socket, torque wrench, 13mm deep well socket

**NOTE:** Read all instructions before proceeding. Images shown are for passenger side, but instructions apply the same for driver side.

## Removing OE Mirror:



**STEP 1**



**STEP 2-4**



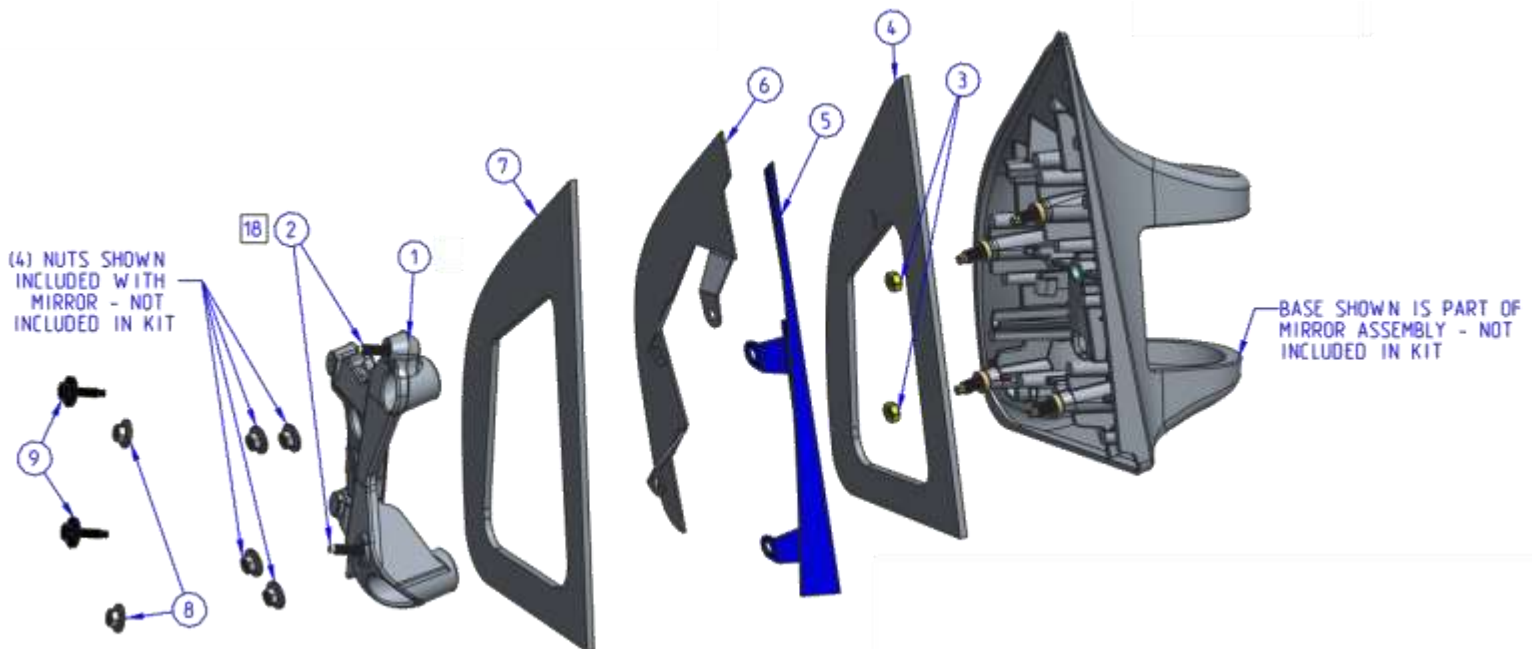
**STEP 5**

1. Pull/pry off interior cosmetic sail cover
2. If applicable, unplug wire harness and remove cable retainer from lower rear stud
3. Using 10mm socket, remove (2) 6mm hex nuts from rear studs
4. Using 10mm socket, remove (2) 6mm hex head screws from hinge area
5. From exterior side, pull mirror straight out to remove from door.
- NOTE:** Mirror is held to door by spring clip, and takes some force to remove
6. Acquire and unbox Velvac mirror
7. Discard Velvac mirror gasket, but keep (4) nuts from Velvac mirror

RIGHT HAND MIRROR AND ADAPTER SHOWN.  
LEFT HAND IS SYMETRICALLY OPPOSITE.

## Adapter Kit Installation Instructions:

Adapter assembly exploded view:





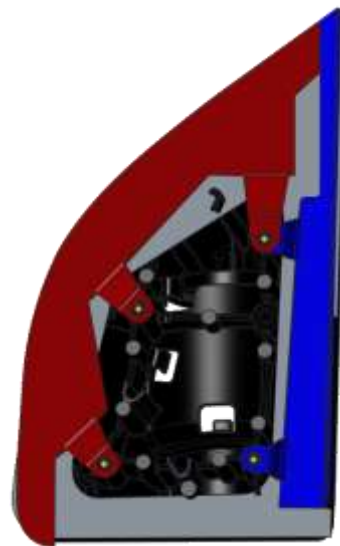
STEP 1



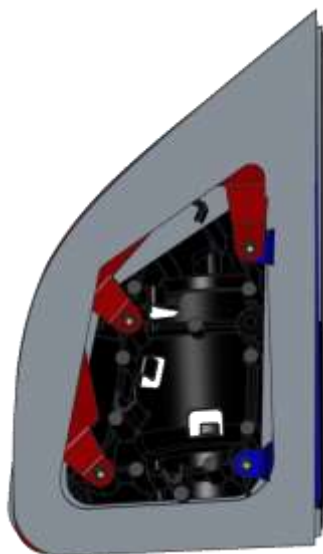
STEP 2



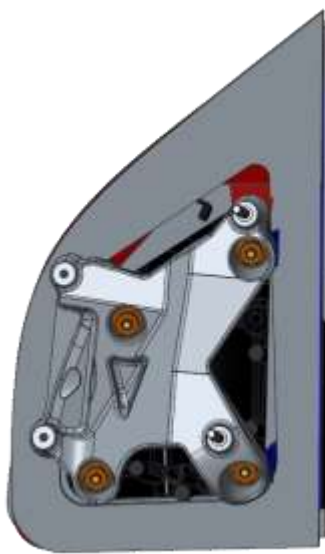
STEP 3



STEP 4



STEP 5



STEP 6-8



INSTALLED

**Note: Step 1 only applicable to mirror bases with 6MM studs**

1. Using 10mm socket, install (1) 6MM HEX NUT [Item #3] onto each of the (2) forward studs on the Velvac mirror, until snug
2. Place GASKET WITH "L" CUTOUT [Item #4] onto mirror base, using the "L" shaped cutout to locate onto the base
3. Place SHEET METAL TRIM PART 1 [Item #5] over (2) rear studs
4. Place SHEET METAL TRIM PART 2 [Item #6] over forward (2) studs and (1) top rear stud
5. Place GASKET W/OUT "L" CUTOUT [Item #7] onto assembled SHEET METAL TRIM PIECES [Items #5 and #6]
6. ADAPTER PLATE AND MOUNTING STUDS [Items #1 and #2] are preassembled to each other – place this assembly over mounting studs on Velvac mirror
7. Loosely install (4) nuts from mirror packaging to fasten all adapter items to Velvac mirror
8. Adjust gaskets to suit, then tighten the (4) nuts to 75-100in-lbs, using 10mm or 13mm socket, depending on size of nut provided

Item #	Qty	Description
1	1	ADAPTER PLATE
2	2	MOUNTING STUD
<b>NOTE: ITEMS 1 &amp; 2 COME ASSEMBLED TOGETHER</b>		
3	2	6MM HEX NUT
4	1	GASKET WITH "L" CUTOUT
5	1	SHEET METAL TRIM, PART 1
6	1	SHEET METAL TRIM, PART 2
7	1	GASKET W/OUT "L" CUTOUT
8	2	6MM NUT WITH WASHER
9	2	HEX HEAD SCREW



## INSTALLATION INSTRUCTIONS FOR 2020XG ADAPTER FOR 2017 AND NEWER FORD F550

**NOTE: (2) people are recommended for steps 9-12**

9. Feed wire harness of mirror through slot in door, then put mirror with installed adapter onto vehicle
10. Make sure gaskets are adjusted to fill any gaps
11. While one person holds the mirror in place, second person hand tighten (2) 6MM NUT WITH WASHER [Item #8] onto mounting studs from interior
12. Hand tighten (2) HEX HEAD SCREWS [Item #7] to adapter through screw holes in hinge area
13. Torque (2) 6MM NUT WITH WASHER [Item #8] and then (2) HEX HEAD SCREW [Item #7] to 75-100in-lbs
14. If applicable, connect wire harnesses
15. If applicable, conceal wire harness connector behind cosmetic sail cover
16. Reinstall cosmetic sail cover